

SERVICE INFORMATION

4-5

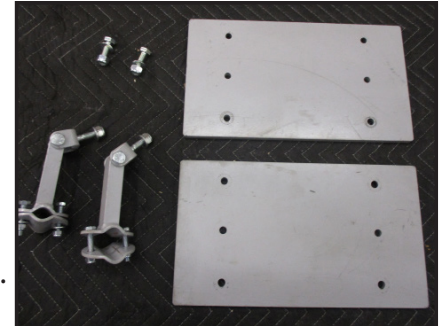
UPDATED 5/24/2019

Bumper Weight Kit Installation Instructions

Part # 922WEIGHT KIT

The Bumper Weight Kit is installed onto the tractor's bumper and consists of two brackets, two weight plates, and mounting hardware.

Tools required: 13mm wrenches / sockets (2), 17mm wrenches / sockets (2).

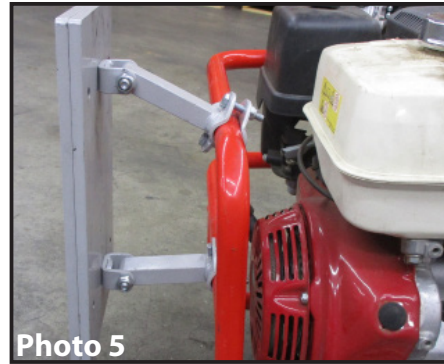


First, install the brackets using the bolt pattern on the weight plates as a guide to achieve proper spacing between each bracket (Photo 1). The curved end of the brackets fit around the tubular bumper and are fastened with two 13mm wrenches.

On the red wrap-around bumpers, the brackets can be installed on the top or middle tube of the bumper, although the top tube is pictured (Photo 2).

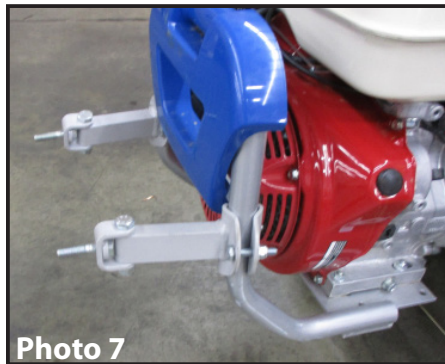


The brackets can also be collapsed (Photo 3). This negatively alters the tractor's fulcrum point for heavy rear-mount attachments, but provides better clearance for the operator's legs if installed during front-mount (mowing) mode.



Using the same method as described above, the Kit can be installed vertically on the red wrap-around bumpers utilizing the top and middle tubes (Photos 4 - 6). This helps center the Kit directly in line with the tractor, but there's no significant performance advantage from the method above. The angle of the brackets to accommodate the plates are secured by two 17mm wrenches.

For black / silver bumpers, as featured on PowerSafe machines and models without a Honda engine, the Kit can be installed only one way: below the blue plastic shield (Photos 7 and 8). Use the same installation method described above.



NOTE: Each weight plate features three rows of bolt holes. For black/silver bumpers, we recommend using the bottom row of holes for sufficient ground clearance (Photo 8).

If you have questions, please contact your dealer or call 800-543-1040.