

BCS	SERVICE INFORMATION	3-9
------------	--------------------------------	------------

SUBJECT: CHANGES IN THE SICKLE BAR MOWERS FOR 2000

APPLICATION: THIS ADVISORY APPLIES TO SICKLE BARS FOR THE 600 & 700 SERIES TRACTORS.

BCS has made changes in the sickle bar attachments, returning to the pre- '94 style of construction. Therefore, we now have the following new part numbers for the transmissions and bar assemblies.

REQUIREMENTS

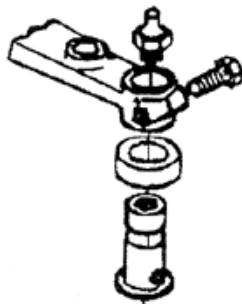
Parts/Assemblies	Transmission	Bar Assembly
30" Sickle Bar	921.90938	921.90928
40"	921.90938	921.90929
45" (dry)	921.90938	921.90930
45" (oil bath)	921.90941	921.90930
53" (oil bath)	921.90942	921.90931

Warning: Serious damage to the Tractor & Mower unit may result if this procedure is not followed correctly.

THE TRANSMISSION

OLD

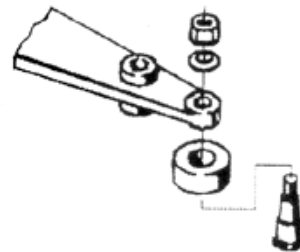
- Bushing diameter of 32 mm
- Cylindrical pin with grease fitting
- Pin secured with horizontal bolt



(FIG. 1)

NEW

- Bushing diameter of 37 mm
- Conical pin without grease fitting
- Pin secured with top-mounted locknut



(FIG. 2)

If you need to combine a new transmission with an old-style bar assembly, simply remove the locknut that retains the vertical drive pin (fig. 2). Remove the 37mm bushing and replace it with the smaller 32mm bushing, which is included in the hardware packet in the new transmission box. Put the pin back in place, securing it with the locknut.

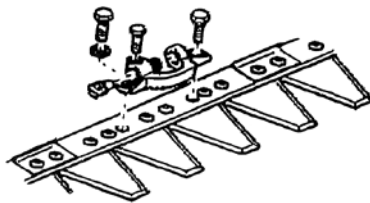
If you want to combine a 1999 transmission with a 2000 bar assembly, an upgrade kit is available from your parts supply (part #59259165). Simply follow the instructions included in the kit.

WARNING: This kit and its 37mm bushing must be installed when using the new-style bar! Serious damage can occur to the entire mower unit if one tries to adjust the blade coupler to compensate for the 5mm difference between the diameters of the drive bearing and the yoke of the coupler.

THE BAR ASSEMBLY:

1995-1999

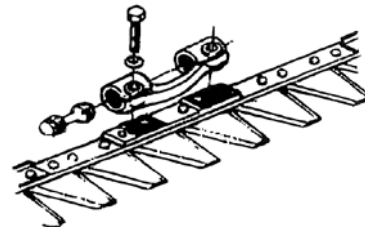
- Blade has threaded M8x1 holes.
- Blade coupler attached with conical and standard M8x1 bolts.



(FIG. 3)

2000-

Blade has separate plate riveted to it, with threaded M8 holes in the plate. Blade Coupler attached with standard M8x1 bolts to the indented plate.



(FIG. 4)

As evidenced in figures 3 and 4, the blade assemblies are not interchangeable. The style depicted in figure 3 (with threaded holes) will continue to be produced to supply the need for spare parts.

The new style of figure 4 was actually the style used in 600 and 700 series “combination” cutter bars prior to 1994. Thus, the following “new” part numbers are identical to those used from 1983 to 1994:

SIZE	BLADE ASSEMBLY	INDIVIDUAL BLADE	RIVETS	QTY
30"	590.48928 (15 Blades)	563.50696	331.12608	18
			331.12609	12
40"	590.48926 (19 Blades)	563.50696	331.12608	26
			331.12609	12
45"	590.48909 (23 Blades)	563.50696	331.12608	34
			331.12609	12
53"	590.48906 (27 blades)	563.50696	331.12608	42
			331.12609	12