

# SERVICE INFORMATION

# 3-16

UPDATED 9/23/2020

**SUBJECT:**  
**SWITCHING HOSE AND PUMP FITTINGS IN ORDER TO INSTALL SOAP  
INJECTOR KIT ON THE BCS PRESSURE WASHER.**

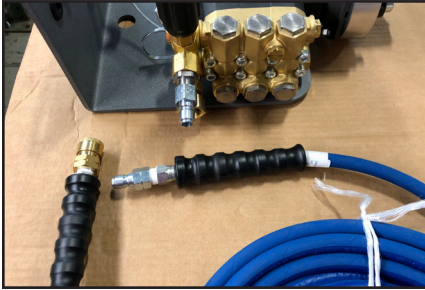


Fig. 1

The BCS Pressure Washer includes a hose that is fitted with one male and one female connector on each end. The Pressure Washer's pump is fitted with a male connector (see figure 1).

In order to install the Soap Injector Kit with the flow of water going in the correct direction (figure 2), the female connector from the hose and the male connector from the pump need to be exchanged (figure 3).

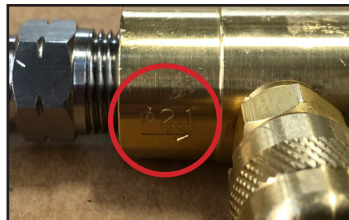


Fig. 2



Fig. 3

Once the two connectors are exchanged, the Soap Injector Kit can be installed between the pump and the hose (figure 4).



Fig. 4