

## Repossi belt rakes – 2 belts

### Assembling instructions

#### 1 – Rake after opening its crate





## 2 – How to assemble the working springs



Turn each pair of springs in its position and fix it through the bolt as depicted in the following picture.



**Repossi**<sup>TM</sup>  
macchine agricole

**Repossi macchine agricole S.r.l.**

Via V. Emanuele II, 40 - 27022 Casorate Primo (PV) - Italia  
Tel. +39 02 905 66 25 - Fax +39 02 905 13 08  
e-mail: [info@repossi.it](mailto:info@repossi.it) - Web: [www.repossi.it](http://www.repossi.it)

REA 236205

C.F. e P.IVA 01981040189





**Repossi**<sup>TM</sup>  
macchine agricole

**Repossi macchine agricole S.r.l.**

Via V. Emanuele II, 40 - 27022 Casorate Primo (PV) - Italia  
Tel. +39 02 905 66 25 - Fax +39 02 905 13 08  
e-mail: [info@repossi.it](mailto:info@repossi.it) - Web: [www.repossi.it](http://www.repossi.it)

REA 236205

C.F. e P.IVA 01981040189

### 3 – Steering lever



After removing the packaging, remove the washer and the split pin



**Repossi**<sup>TM</sup>  
macchine agricole

**Repossi macchine agricole S.r.l.**

Via V. Emanuele II, 40 - 27022 Casorate Primo (PV) - Italia  
Tel. +39 02 905 66 25 - Fax +39 02 905 13 08  
e-mail: [info@repossi.it](mailto:info@repossi.it) - Web: [www.repossi.it](http://www.repossi.it)

REA 236205

C.F. e P.IVA 01981040189



Remove the screw and the washer as well.





**Repossi**<sup>TM</sup>  
macchine agricole

**Repossi macchine agricole S.r.l.**

Via V. Emanuele II, 40 - 27022 Casorate Primo (PV) - Italia  
Tel. +39 02 905 66 25 - Fax +39 02 905 13 08  
e-mail: [info@repossi.it](mailto:info@repossi.it) - Web: [www.repossi.it](http://www.repossi.it)

REA 236205

C.F. e P.IVA 01981040189

Insert the rudder pin in its place as depicted in the following picture





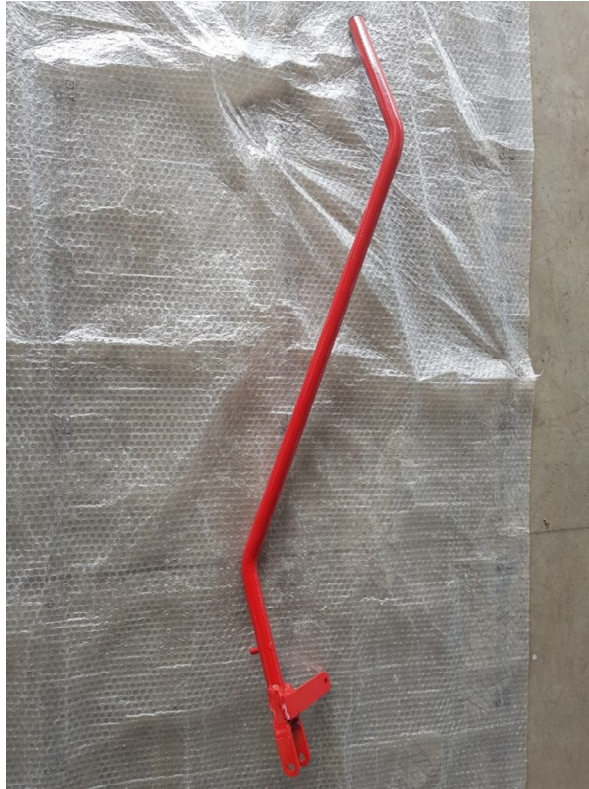
Insert the second pin into the zinc plate slot as depicted in the picture below



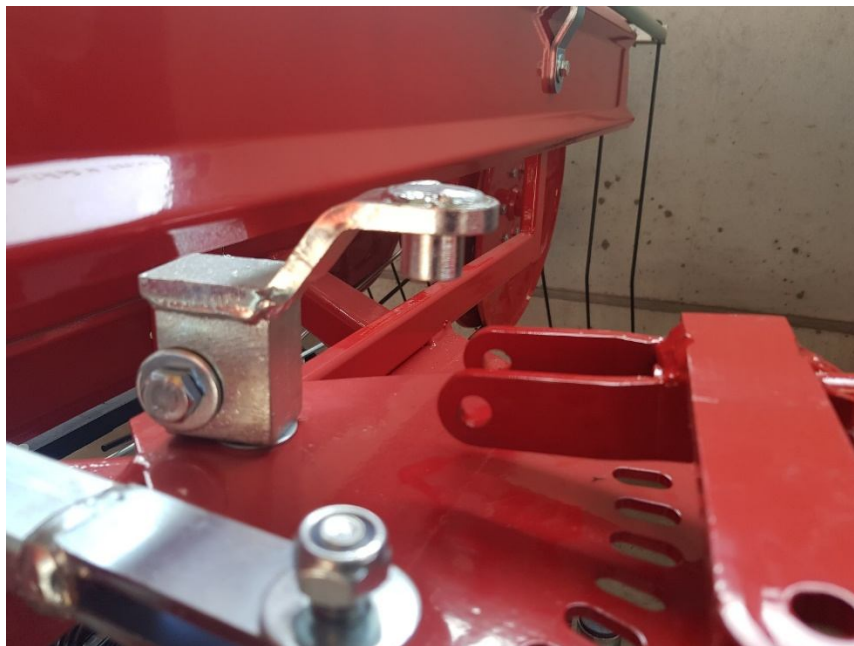
Fix the rudder with the split pin and the screw (do not forget the washer!) previously removed.



#### 4 - Height adjustment bar



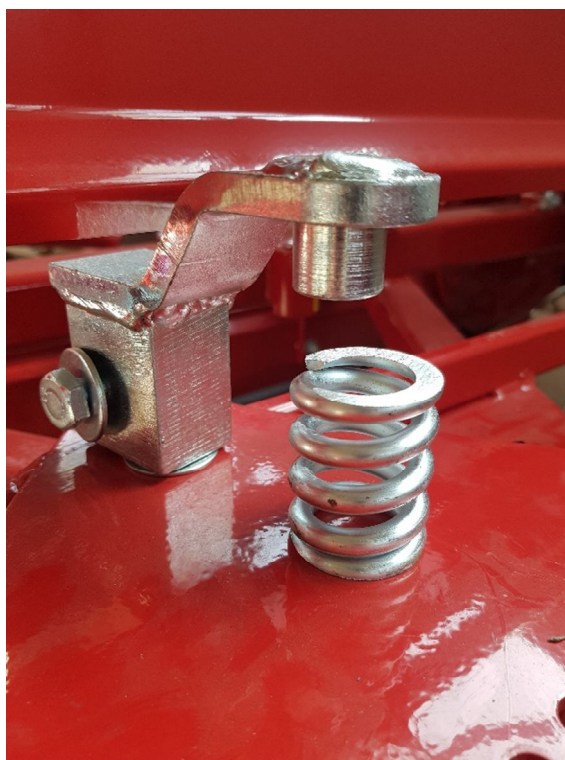
Remove the sellotape and keep the spring in the hand (picture below)



Insert the spring into its pin (see the picture below)



Fix the red rod to the zinc cube with screw, washer and bolt (see the above and below pictures)





Fix the red side plate to the zinc fork using its bolt (see the below picture)



## 5 - Wheels





**Repossi**<sup>TM</sup>  
macchine agricole

**Repossi macchine agricole S.r.l.**

Via V. Emanuele II, 40 - 27022 Casorate Primo (PV) - Italia

Tel. +39 02 905 66 25 - Fax +39 02 905 13 08

e-mail: [info@repossi.it](mailto:info@repossi.it) - Web: [www.repossi.it](http://www.repossi.it)

REA 236205

C.F. e P.IVA 01981040189

## 6 - Flat bar for vertical linkage

