

OWNER OPERATOR'S MANUAL

BCS Buddy Cart (V.2 - Swivel) 92193042

Revision: 7/2021

Distributed by:
BCS America, LLC
14151 Fir Street
Oregon City, OR 97217
info@bcsamerica.com



Please read and understand this manual and all instructions prior to operating or servicing this attachment.

Safety Rules

Read and understand all safety rules and operating instructions before using this attachment.

Follow all safety rules and operating instructions provided by your tractor manual.

Never allow children or untrained persons to operate tractor and attachment.

Reduce tractor speed and allow extra stopping distance when moving heavy loads.

Reduce tractor speed and weight when operating on slopes.

Operate up and down slopes, never across the face of slopes.

Do not carry passengers on tractor or attachment.

Avoid sudden turns or maneuvers.

Do not remove warning decal from product.

Check product for worn, loose, or damaged parts before each use. If any damage is present, repair the product before using.

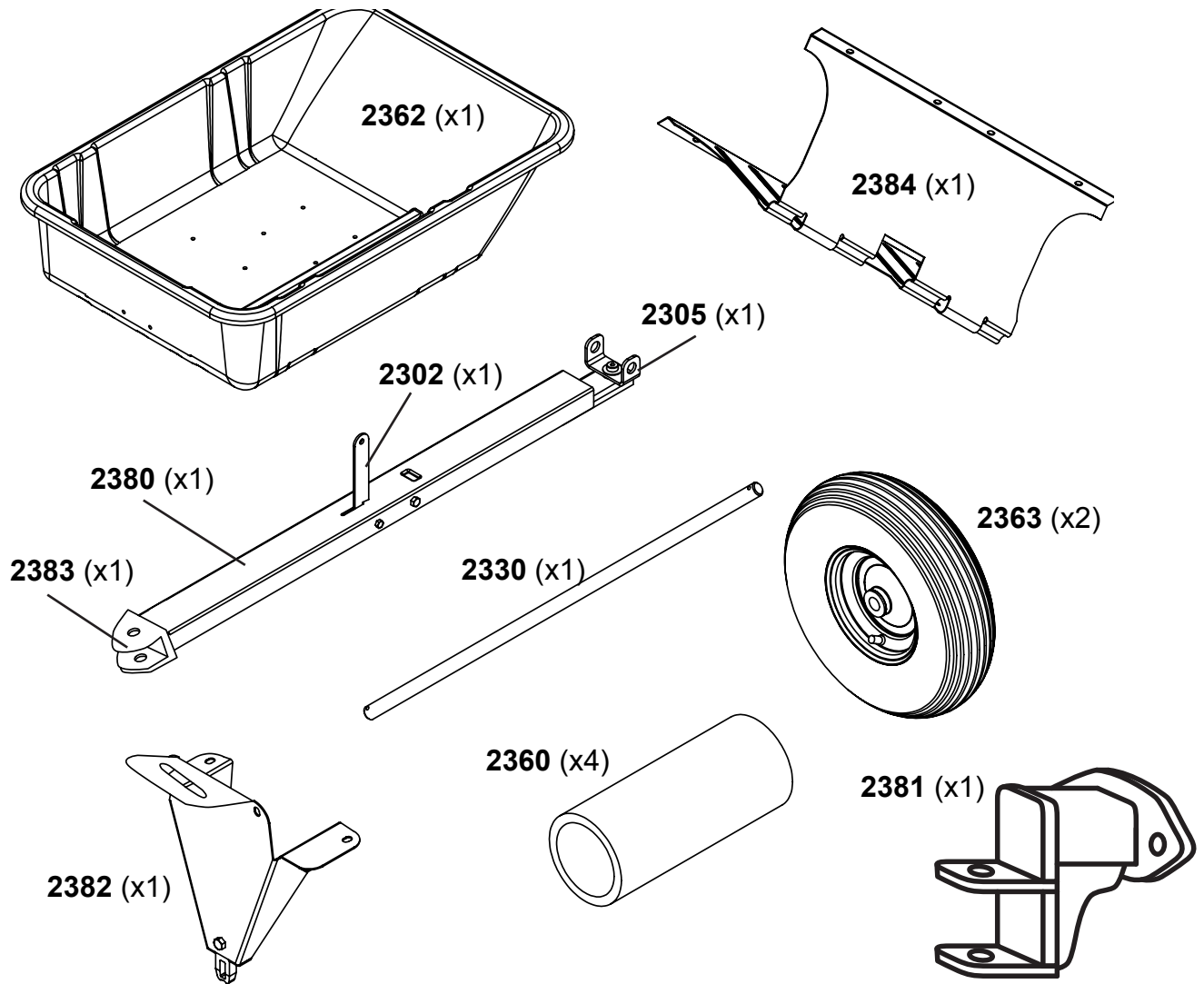
Check product for loose or missing fasteners before each use. Tighten or replace fasteners as needed before using.

Do not exceed tractor speed of 2.8 miles per hour when using Buddy Cart.

Do not exceed Buddy Cart rated weight capacity of 550 pounds.

Do not attempt to disconnect Buddy Cart from tractor if it is loaded.

Carton Contents



Part #	Description [np = not pictured]	Qty
2302	Hand latch lever	1
2305	Rear swivel clevis	1
2330	3/4" axle shaft	1
2360	Spacer hand latch	4
2361	Hand latch spring [np]	1
2362	Poly tub - 11 ft ³	1
2363	16" wheel/tire assembly	1
2380	Tongue	1
2381	Drop hitch	1
2382	Front chassis	1
2383	Tongue hitch clevis	1
2384	Rear chassis / Axle support	1

Part #	Description [np = not pictured]	Qty
n/a	1/8" x 1 1/2" Cotter pin [np]	2
n/a	3/4" Axle shim washer [np]	10
n/a	5/16" - 18x1 Carriage bolt (chassis) [np]	8
n/a	5/16" - 18 Flange lock nut (chassis) [np]	8
n/a	5/8" - 11x5" Bolt (drop hitch) [np]	1
n/a	5/8" - 11 Nylock nut (drop hitch) [np]	1
n/a	5/8" - 11x1.5" Bolt (clevis tongue) [np]	1
n/a	5/8" - 11 Deformed lock nut (clevis tongue) [np]	1
n/a	1/2" - 13x1.5" Bolt (clevis r. chassis) [np]	1
n/a	1/2" - 13 Deformed lock nut (clevis r. chassis) [np]	1
n/a	1/2" Flat washer [np]	1
n/a	3/8" - 16x4" Bolt (hand latch lever) [np]	2
n/a	3/8" Nylock nut (hand latch lever) [np]	2

Tools Required for Assembly:

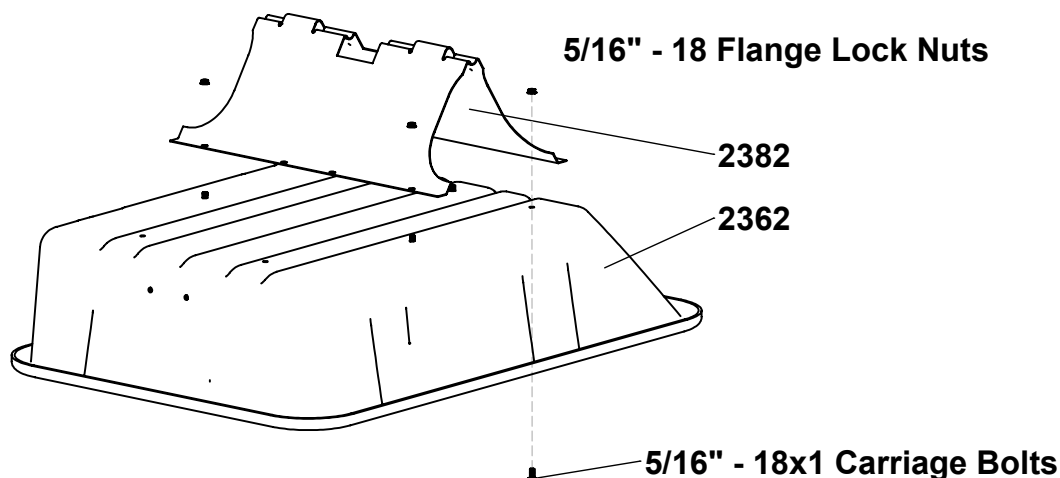
• 1/2" Wrench or Socket

• 15/16" Wrench (qty 2) or Socket

Assembly Instructions

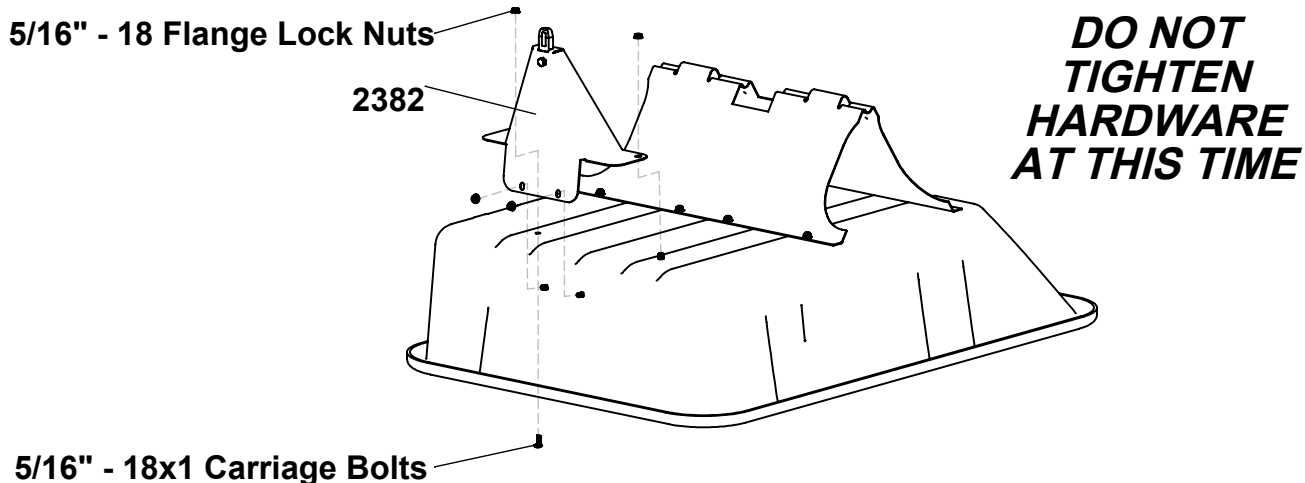
1

Attach Rear Chassis (2384) to Poly Tub (2362) and tighten with hardware as shown.



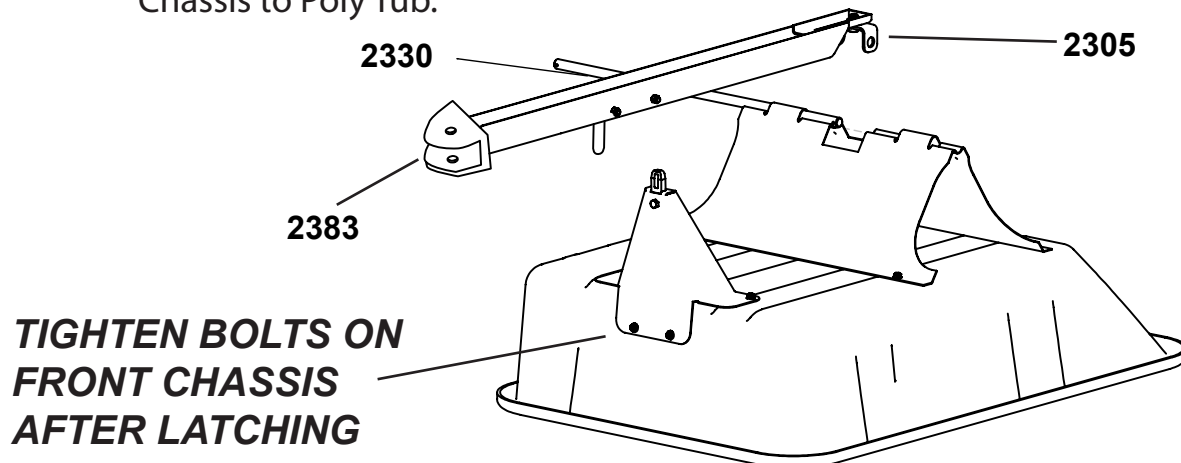
2

Attach Front Chassis (2382) loosely to Poly Tub (2362) with hardware as shown.



3

Insert Axle Shaft (2330) into Rear Chassis/Axle Support (2384) and through Rear Swivel Clevis (2305) as shown. Align Tongue (2380) with Front Chassis (2382) and press down to latch. Once latched, completely tighten nuts/bolts securing Front Chassis to Poly Tub.



Assembly Instructions Continued

4

Apply anti-sieze lubricant between Tongue Hitch Clevis (2383) and Tongue (2380) and adjust the bolt to ensure it is not too tight to allow rotation.

5

Slide Wheel/Tires (2363) onto Axle Shaft making sure that valve stem is facing outwards, and placing Axle Shim Washers before and after each wheel. Secure with Cotter Pins. Check the tire pressure and fill to 35 PSI.

6

Insert Drop Hitch (2381) into Tongue Hitch Clevis (2383), then secure with 5/8" - 11x5" Bolt and 5/8" - 11 Nylock Nut. Drop Hitch can be bolted directly to PTO studs of BCS Tractor. If the Tractor has a Quick Hitch Bushing installed, the Drop Hitch may be fitted with an Empty Quick Hitch Tang (92257851, not included).

Operating Instructions

Before Using Dump Cart:

1. Check tire pressure and inflate to 35 PSI if needed.
2. Read all Safety Rules found on page 1.

How to Use Buddy Cart:

1. Attach Buddy Cart to your tractor using the supplied Drop Hitch or by installing an Empty Quick Hitch Tang (not included) onto the Drop Hitch (if a Quick Hitch Bushing is installed on Tractor).
2. Before loading the Buddy Cart for initial use, allow a few minutes to become familiar with steering the cart while mounted to a BCS tractor. The Buddy Cart requires the operator to assist with maintaining a straight path. **WARNING:** Excessively sharp turns or hurried maneuvering may result in a "jack-knife" effect. If this occurs, engage the tractor's Reverse and re-position the cart directly in front of the tractor prior to resuming normal operation.
3. Do not exceed 550 pounds when loading material into the cart body.
4. Distribute the weight of the load as evenly as possible in the cart body for best handling.
5. When hauling heavy loads, verify that your tractor has adequate braking capacity.
6. Do not exceed 2.8 miles per hour when transporting Buddy Cart.
7. Do not attempt to disconnect the Buddy Cart if it is loaded.

How to Empty Buddy Cart:

1. Pull hand lever forward to release the latch mechanism.
2. Angle cart body as desired to guide the material to preferred location.
3. Lower the body and guide the latch into the drawbar and relatch.

Periodic Maintenance:

- Tighten fasteners as needed before each use.
- Check tire pressure before each use.

Warranty

This warranty applies to the original purchaser and is non-transferable. If this product fails due to a defect in material or workmanship within 3 YEARS from the date of purchase, we will at our option repair or replace it free of charge. This warranty excludes tires and wheels, which are expendable and become worn during normal use.

This warranty does not cover:

- Repairs necessary because of operator abuse or negligence.
- Equipment used for commercial or rental purposes.
- Paint that is worn or faded due to normal use or exposure.

To arrange for product repair call 1-800-543-1040, or return this product to place of purchase for replacement.

This warranty gives you specific legal rights, and you may also have other rights which may vary from state to state. This warranty applies only while this product is in use in the United States and Canada.

In the space below, record the purchase date of your Buddy Cart.

Model Number: 92193042

Purchase Date: _____

Serial Number: _____

Keep this Owner's Manual and your receipt in a safe place for future reference.

After the three year warranty period, all replacement parts may be ordered by calling 1-800-543-1040.

When ordering replacement parts, always give the following information:

- Product: Buddy Cart
- Model Number: 92193042
- Part Number: _____
- Part Description: _____



NOTES: _____

BCS Buddy Cart (92193042)